

Human Complement C5 Protein

Cat. No. CC5-HM1C5

Description

Source	Recombinant Human Complement C5 Protein is expressed from HEK293 with His tag at the C-Terminus. It contains Gln19-Cys1676.
Accession	P01031-1
Molecular Weight	Human Complement C5 Protein is cleaved into α chain and β chain by the enzyme lysis. Each chain has a predicted MW of 112.5 kDa (α chain) and 73.29 (β chain). Due to glycosylation, the protein migrates to 110-114 kDa (α chain) and 69-73 (β chain) based on Bis-Tris PAGE result.
Endotoxin	Less than 1EU per μ g by the LAL method.
Purity	> 95% as determined by Bis-Tris PAGE > 95% as determined by HPLC

Formulation and Storage

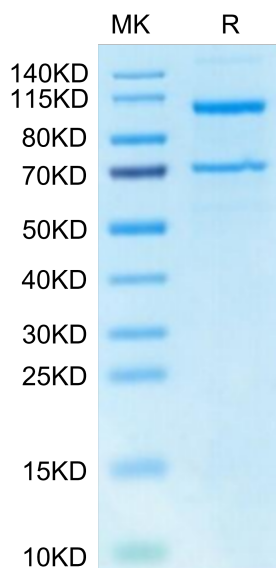
Formulation	Lyophilized from 0.22 μ m filtered solution in PBS (pH 7.4). Normally 8% trehalose is added as protectant before lyophilization.
Reconstitution	Centrifuge the tube before opening. Reconstituting to a concentration more than 100 μ g/ml is recommended. Dissolve the lyophilized protein in distilled water.
Storage	-20 to -80°C for 12 months as supplied from date of receipt. -80°C for 3 months after reconstitution. Recommend to aliquot the protein into smaller quantities for optimal storage. Please minimize freeze-thaw cycles.

Background

Complement component 5 (C5) is an essential factor of the defensive complement system in all vertebrates. C5 plays a major role in complement activation; C5 convertase cleaves C5 into the pro-inflammatory C5a, and C5b, the nidus for the formation of the lytic membrane attack complex.

Assay Data

Bis-Tris PAGE



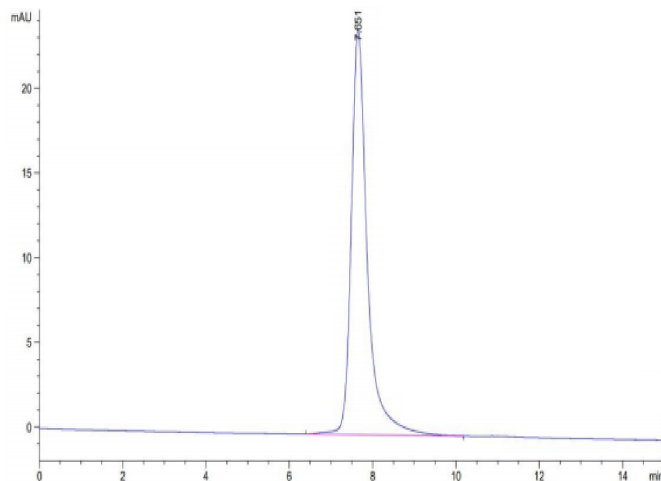
Human Complement C5 on Bis-Tris PAGE under reduced condition. The purity is greater than 95%.

SEC-HPLC

Human Complement C5 Protein

Cat. No. CC5-HM1C5

Assay Data

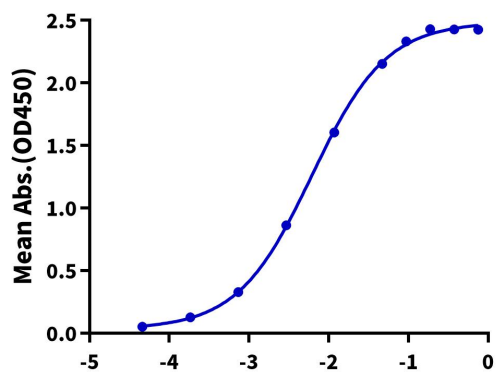


The purity of Human Complement C5 is greater than 95% as determined by SEC-HPLC.

ELISA Data

Human Complement C5, His Tag ELISA

0.2µg Human Complement C5, His Tag Per Well



Immobilized Human Complement C5, His Tag at 2µg/ml (100µl/well) on the plate. Dose response curve for Anti-Complement C5 Antibody, hFc Tag with the EC50 of 6.1ng/ml determined by ELISA (QC Test).